

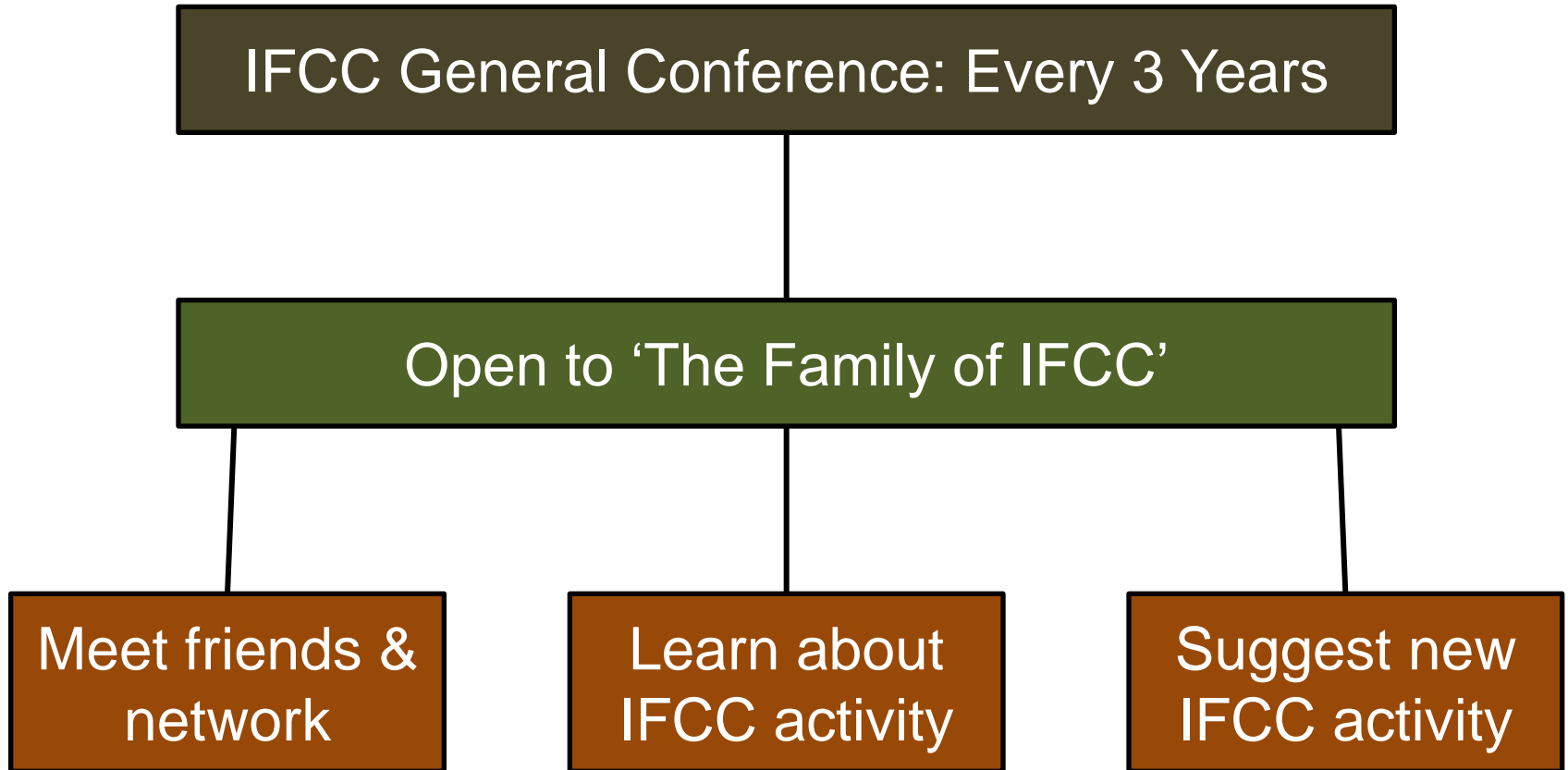


Welcome

Graham Beastall

gbeastall@googlemail.com

IFCC General Conference: Purpose



'The IFCC Family' : Our Strength

- 88 Full Member societies
- 10 Affiliate Member societies
- 50 Corporate Members

Representing ~40,000 senior laboratory professionals

- 3 Divisions
- 17 Committees
- 20 Working Groups
- 9 Task Forces / Integrated projects
- 5 Regional Federations

Comprising ~200 experts from around the world.

New Full Members: Since Corfu



**National Association of Medical
Analysis Laboratories (ALAM) - Algeria**



**Nepal Association for Medical
Laboratory Science (NAMLS)**



**Association of Clinical Biochemists in
Zimbabwe (ACBZ)**



**Kazakhstan Association of Medical
Laboratory Diagnostic (KAMLD)**



Biomedical Society of Zambia (BSZ)

New Affiliate Members: Since Corfu



**Philippine Council for Quality Assurance in
Clinical Laboratories (PCQACL)**



**Association of Clinical Chemistry &
Laboratory Medicine of Ukraine (ACCLMU)**

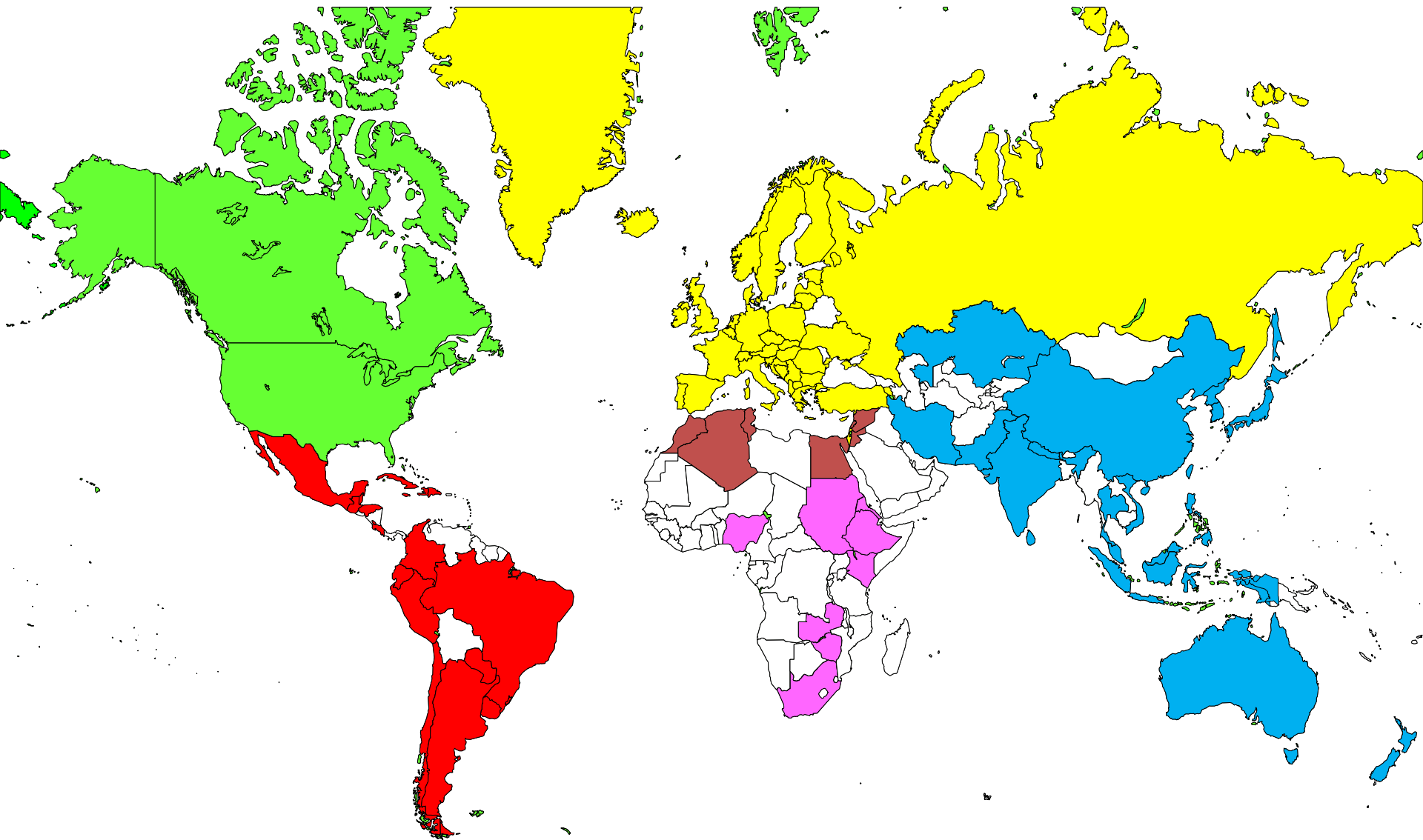


**Association of Medical Biochemists of
India (AMBI)**



**Federación Nacional de Químicos
Clínicos (CONAQUIC A.C.) - Mexico**

IFCC Full Members: November 2012



New Corporate Members: Since Corfu

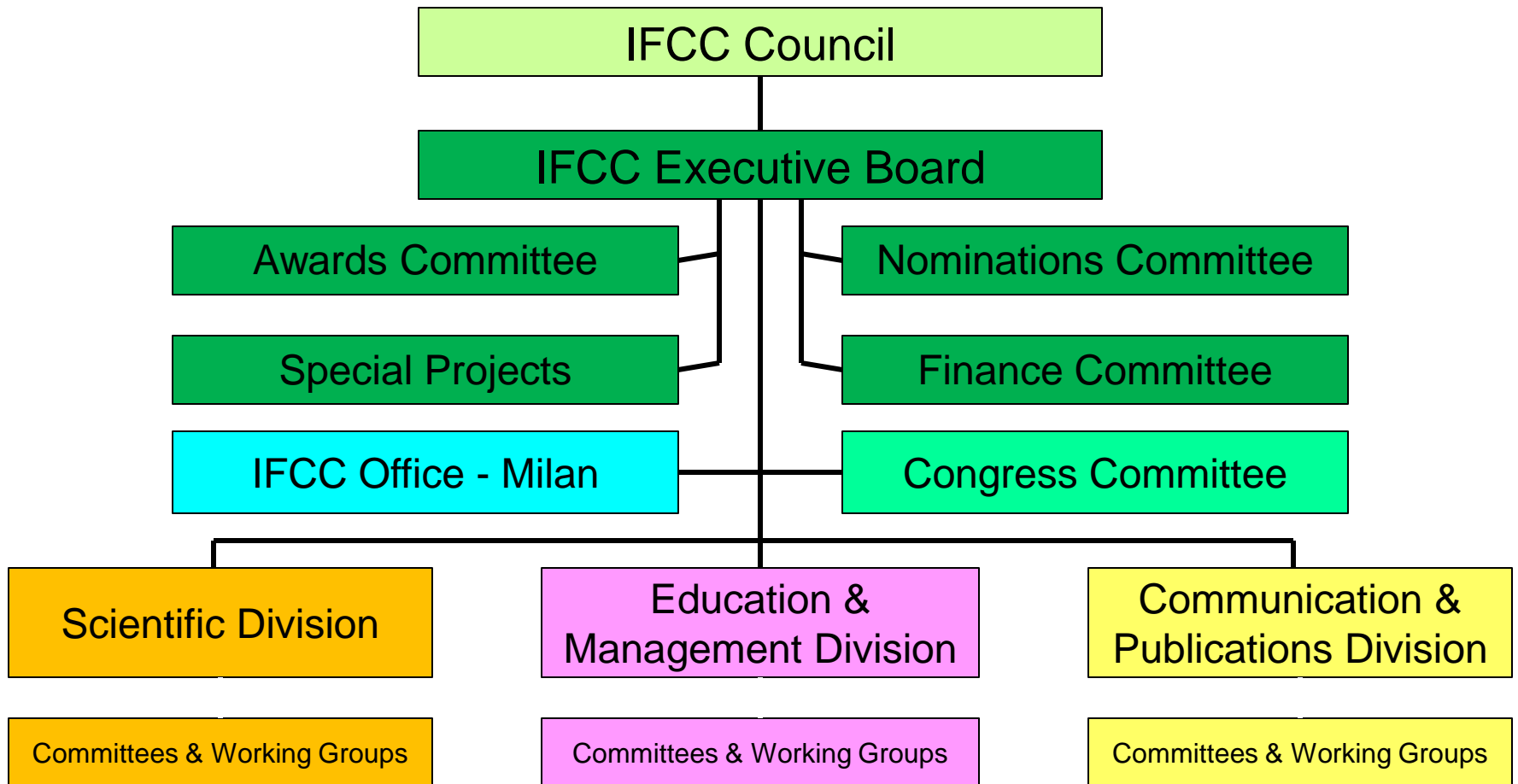
1. Biocrates Life Sciences AG
2. Unilabs
3. Philips
4. Labquality
5. Mindray
6. Nova Biomedical Corporation
7. Immunodiagnostic Systems Ltd (IDS)
8. Merck Millipore
9. C.P.M. Diagnostic Research SAS
10. One World Accuracy Collaboration
11. Wisplinghoff Laboratoriumsmedizin Köln
12. BG Medicine

The Aims of IFCC

"Through leadership and innovation in science and education we will strive to:

- Enhance the scientific level and the quality of diagnosis and therapy for patients throughout the world.
- Build on the professionalism of our members to provide quality services to patients.
- Communicate effectively with our members, other healthcare providers and the public to ensure knowledge of our excellent scientific and educational achievements.
- Focus on scientific standards, publications, education and communications.
- Communicate effectively through a variety of electronic media.
- Hold outstanding congresses and conferences to bring the efforts of IFCC to the global community".

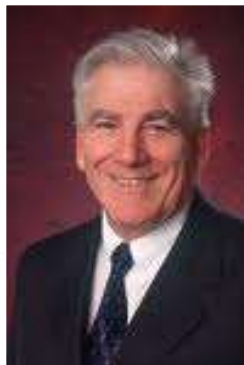
IFCC Structure and Organisation



IFCC Executive Board: 2012 -14



Graham Beastall
President



Howard Morris
Vice President



Jocelyn Hicks
Past President



Sergio Bernardini
Secretary



Bernard Gouget
Treasurer



Thomas Brinkmann
Corporate Rep.



Larry Kricka
Member



Vanessa Steenkamp
Member



Ulisses Tuma
Member

Special Projects: Nine Task Forces

- Projects operating across the Divisions. Several, in partnership with international clinical organisations:
 - Ethics
 - Paediatric laboratory medicine
 - Pharmacogenetics
 - Chronic kidney disease
 - Implementation of HbA1c standardisation
 - Young scientists
 - Clinical application of cardiac biomarkers
 - Point of care testing
 - Impact of laboratory medicine on clinical management and outcomes

IFCC Office Team



**IFCC Office Staff
(from left to right):
Silvia Colli-Lanzi,
Paola Bramati,
Silvia Cattaneo**

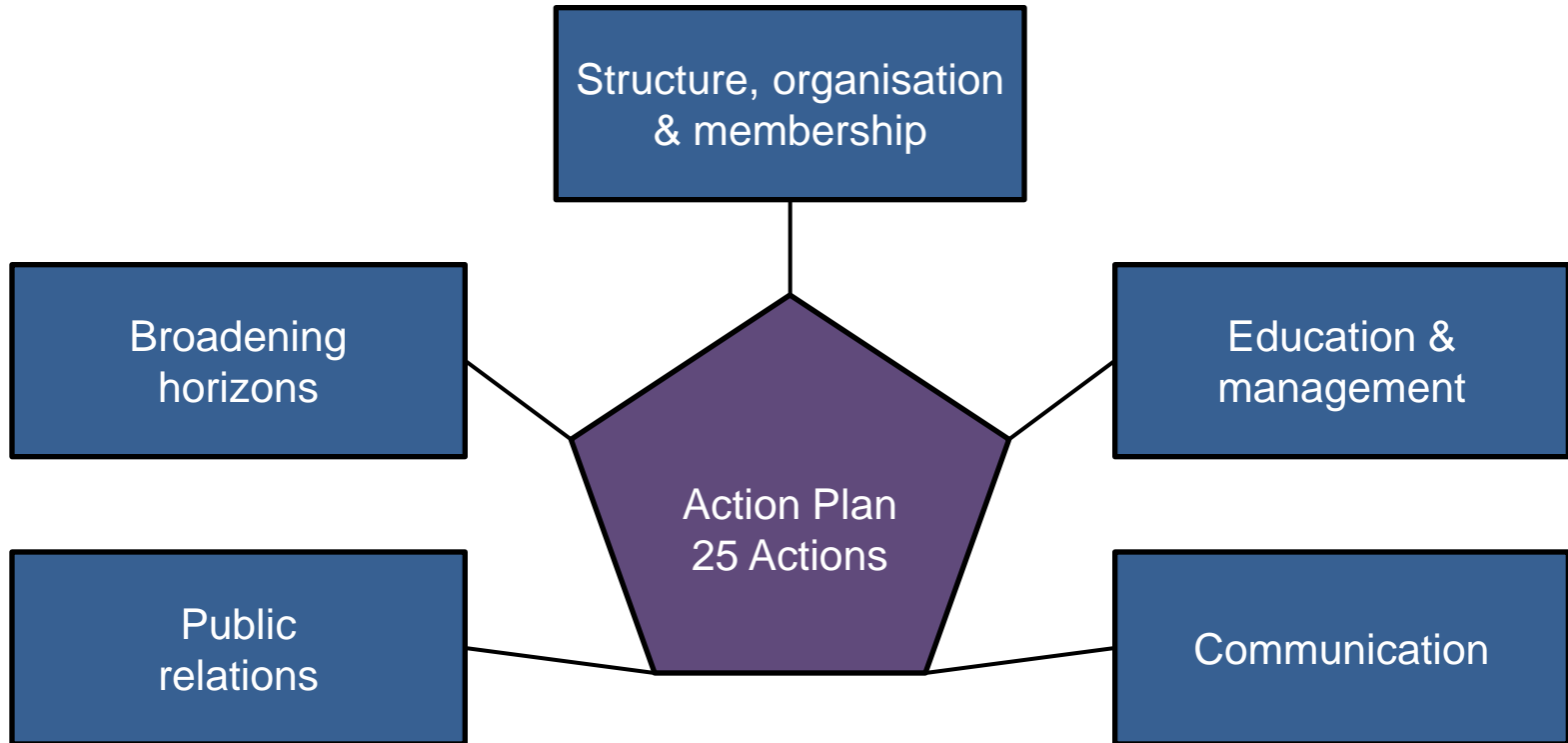


'Strategic Action Plan 2012-14'

Graham Beastall

gbeastall@googlemail.com

Strategic Action Plan 2009-2011

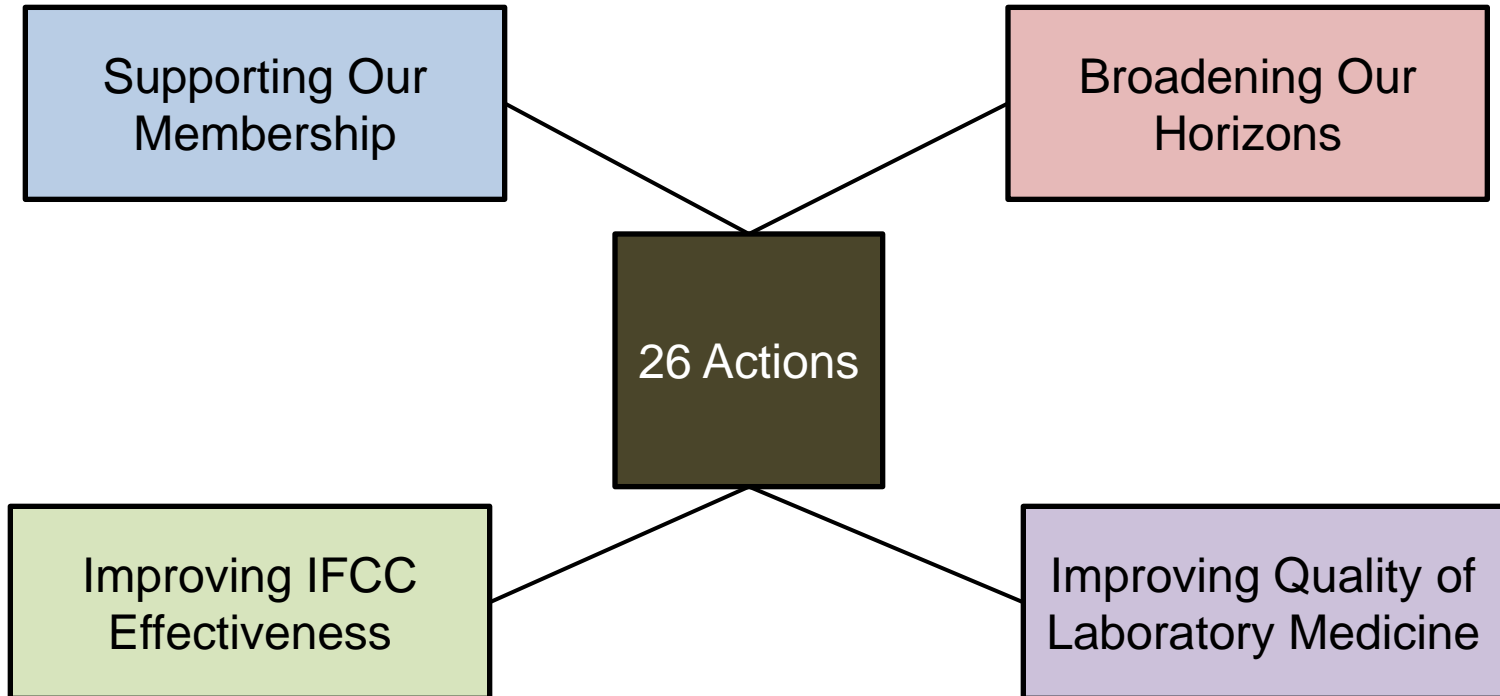


Achievement: 22 of 25 Actions achieved.

Failures:

- Creation of an IFCC Foundation as a new income stream
- Establish links with pharmaceutical companies
- Establish a collaborative project within medical microbiology

Strategic Action Plan 2012-2014



This action Plan applies to the Executive Board
The three Divisions have their own work programmes

Supporting Our Membership

1. Introduce electronic voting. Hold a trial election
2. Introduce and use Survey Monkey
3. Conduct 3 surveys of Member Opinion each year
4. Develop new support materials for developing countries
5. Identify ways to improve two-way communication with Members

Supporting Our Membership (cont)

6. Establish and promote a register of expertise
7. Support the development of three new distance learning programmes
8. Develop support materials to enable members to promote the value of laboratory medicine
9. Meet regularly with Presidents of IFCC Regional Federations
10. Improve effective working with COLABIOCLI

Broadening Our Horizons

11. Put in place a structure to facilitate expanded IFCC national society membership
12. Promote increased variety of Corporate Membership
13. Develop one project each year in an area other than clinical chemistry
14. Increase collaboration with international clinical organizations

Broadening Our Horizons

15. Support the new Task Force on the impact of laboratory medicine on clinical management and outcomes
16. Support the new Task Force on point of care testing
17. Support succession planning and the further development of the Task Force for Young Scientists

Improving the Quality of Laboratory Medicine

18. Partner with others to support laboratory accreditation in developing countries
19. Position IFCC in relation to the AACC harmonization project
20. Establish at least one new joint project with WASPaLM
21. Establish at least one new project with ILAC
22. Strengthen links with WHO

Improving IFCC Effectiveness

23. Identify at least one new income stream
24. Benchmark IFCC performance against that of other international Federations
25. Audit the performance of IFCC as perceived by its members
26. Undertake an horizon scanning project in order to position IFCC in the changing world of laboratory medicine

Implementation and Update

The Strategic Action Plan is reviewed in detail at every Executive Board meeting

IFCC Members are always able to suggest new projects for possible addition to the Strategic Action Plan